

WIMBLEDON COMMUNITY FORUM  
28 MARCH 2019

(7.15 pm - 9.15 pm)

PRESENT Councillors Councillor James Holmes (in the Chair),

1 WELCOME AND INTRODUCTIONS (Agenda Item 1)

The meeting was held at the Wimbledon Arts Space, and chaired by Councillor James Holmes. More than 30 residents attended, as well as seven other Merton Councillors. The Chair welcomed everyone to the meeting, introducing the councillors present at the meeting.

2 CHANGES TO PARKING CHARGES CONSULTATION (Agenda Item 2)

Councillor Tobin Byers, Cabinet Member for Adult Social Care and Health introduced the rationale behind the proposed changes and then the detail was presented by Cath James, Assistant Director for Public Protection, and Ben Stephens, Head of Parking Services. The presentation slides are an appendix to this report.

Cllr Byers said that the wider determinants of health, including the environment have a huge impact and that the council was keen to use the levers it has to influence behaviours that will have a positive impact. In this case the proposal is to encourage behaviours that will improve Air Quality and encourage Active Travel. Tobin said he understood this was a difficult issue and there would be opposition but this was a serious issue that required challenging choices.

The consultation would begin on 29 March and would run until 5 May. The results would then be reported to Scrutiny and Cabinet. The Council is also looking into emissions based charging and would be reviewing the diesel levy but these will be considered in the autumn so are not part of this consultation. The consultation can be found at <https://www.merton.gov.uk/streets-parking-transport/parking/charges-consultation-2019>

The consultation is featured in the latest My Merton and notices have been posted on streets effected. Notices will also be published in the Wimbledon Times and there will be a link on the home page of the Council website. The consultation will also be promoted on social media and with key stakeholder groups. To respond you can complete an online survey, send in an email to

[ParkingConsultation2019@merton.gov.uk](mailto:ParkingConsultation2019@merton.gov.uk) or write to the Council at Parking Consultation 2019, Parking Services, Civic Centre, London Road, Morden, SM4 5DX

Residents raised a number of issues as set out below along with the response from the team where relevant:

Issue	Response
The PTAL does not reflect the reality of the quality of public transport	This is a widely use Transport for London assessment.
The charges will not change behaviour, there is no evidence supporting this and there is no target for the reduction in car use.	The proposals aim to be fair and reasonable and nudge rather be too blunt a tool.
Parked cars do not have an impact on air quality whereas the following do: <ul style="list-style-type: none"> <li>• Taxis idling at the station</li> <li>• Buses</li> <li>• HGVs</li> <li>• Construction/development</li> <li>• Mopeds blocking free parking outside the station</li> </ul>	Cars do move and it is a choice to keep one. The Council is working with TfL to move taxis and buses to lower emission vehicles and is also beginning an anti-idling campaign. Planners consider the impact on air quality of all applications and there is a section on air quality in the draft Local Plan. The Council is working with Love Wimbledon to identify a better position for the delivery mopeds.
No charges for those with private driveways or outside controlled parking zones	The proposals form part of a much larger picture to tackle Air Quality but is an important lever the Council can use.
Negative impact on retailers of increasing charges	The 20min free bays in the smaller retail centres are unaffected.
Cycling lanes are in poor condition and infrastructure not good enough to encourage active travel	Addressing this forms part of the plans for Local Improvement Programme (LIP) that is being agreed with Transport for London

Cllr Byers summed up by explaining that any income from parking charges or enforcement is restricted to transport related projects including the £9m cost of Freedom Passes, road infrastructure and addressing air quality. Additional income will help us do more but the object is to reduce the number of cars in Merton, and therefore issue less permits.

Parking is not the only issue in relation to air quality and the Air Quality Action plan sets out more than 70 measures the council is taking:

<https://www.merton.gov.uk/communities-and-neighbourhoods/pollution/air-quality-and-air-pollution/local-air-quality-management>

The consultation is just beginning and residents are encouraged to take part and to document any concerns. All the responses will be weighed up before a decision is taken.

### 3 STEPHEN HAMMOND MP (Agenda Item 3)

Stephen Hammond, MP for Wimbledon, provided an update on local issues: Crossrail 2 – not much progress as the funding model is still being discussed and they still have not determined the route. Stephen said he would hold a public meeting if there was any news

Heathrow – Stephen had organised a well-attended public meeting to encourage residents to have their say on the consultation on new flight paths. The proposals would see a substantial increase in the number of low flights over Wimbledon. Stephen had responded directly to the consultation to say the proposals were unacceptable.

Wimbledon Masterplan – Stephen had met with resident associations and councillors to feedback on the draft masterplan.

Wimbledon Police Station – there has still not been a final decision on the future of the station following the judicial review that forced the Mayor of London to reconsider the proposed closure. Stephen did not think it was likely the Mayor would change his mind.

Bins – there were still some residents complaining they had not received the new wheelie bins. The reputation of the borough is being undermined and the service is not acceptable.

Parking – whilst air quality is an important issue moving vehicles are more of an issue than parking, and the council also needs to look at the impact of development.

In response to questions from residents Mr Hammond said he would continue to encourage residents to respond to Heathrow consultations and would raise with Merton Council's Chief Officer if the Council can publish their response. Cllr Byers also said he would look into this. Mr Hammond said that Heathrow expansion would have more impact on noise pollution than on air quality although air quality would be affected by the additional vehicles going to Heathrow.

Air quality was also raised in the planning application for the Harris School development and Mr Hammond said he was disappointed the application based. Cllr Byers said he would be happy to look at the construction issues at this site.

A resident asked about additional street bins being made available and Mr Hammond said the councillors present would be best placed to take this up.

#### 4 WARM & WELL IN MERTON PROJECT (Agenda Item 4)

Mark Williams from Wimbledon Guild gave a presentation on the Warm and Well in Merton project. The slides are attached to this report. Mark explained that this is an important issue due to the excess winter deaths, especially for the over 75s and in 2016/17 there were 851 emergency admissions for injuries due to falls among people aged 65 years and over in Merton. The project offers information and advice, free home energy checks for residents meeting certain criteria, as well as opportunities to access financial support. The project is looking to work with local organisations and groups to get everyone ready for next winter, giving Warm & Well talks and distributing information packs which include a free thermometer. Anyone interested in getting involved can contact Catherine at Wimbledon Guild at [ckiernan@wimbledonguild.co.uk](mailto:ckiernan@wimbledonguild.co.uk).

A resident raised concerns about the quality of footways, the impact of tall buildings on creating wind tunnels and landlords including Clarion moving to electric only buildings.

#### 5 PLAY WIMBLEDON AND MASTERPLAN UPDATE (Agenda Item 5)

Paul McGarry gave an update on consultation on the draft Wimbledon Master Plan. The slides are attached to this report and all the consultation responses have been published at <https://www.merton.gov.uk/planning-and-buildings/regeneration-projects/future-wimbledon/future-wimbledon-consultation-responses>

A lot of detail had been provided by respondents so officers are still examining the information. A final report will be published in June.

The Play Wimbledon workshops looked at using the space in St Marks Place and outside New Wimbledon Theatre. The full report on this work can be found at <https://www.merton.gov.uk/planning-and-buildings/regeneration-urban-design/future-wimbledon>

Paul and Pablo Sendra from LUGADERO shared the concepts for permanent options in these spaces but detailed designs would follow and be consulted on.

Residents raised the following points about the two sites.

St Marks Place:

- Please explore Barcelona style bins that are underground
- Does the area need to be repaved given the costs?
- The space is not sufficient for cars to pass each other
- Having art or display options on the side of the library
- Fixed designs reduce flexibility
- Kiosks are not needed



- There would need to be additional crowd control
- St Mark's Church are broadly in favour of the designs

New Wimbledon Theatre:

- Would like more ambitious approach to the seating
- Hedging would be better than planters for greening

#### 6 OPEN FORUM (Agenda Item 6)

Sergeant Marcia Heritage had provided contact details for anyone wanting to raise any local crime and safety issues. The local Safer Neighbourhood Team can be reached at [wimbledontowncentre.snt@met.police.uk](mailto:wimbledontowncentre.snt@met.police.uk).

#### 7 DATE OF NEXT MEETING (Agenda Item 7)

Councillor Holmes thanked everyone for attending and closed the meeting.

Future meetings: all 7.15pm in Wimbledon Arts Space  
Wednesday 19 June 2019; Wednesday 25 September 2019  
Tuesday 3 December 2019; Thursday 26 March 2020

This page is intentionally left blank



# Public health, air quality and sustainable transport:

## A strategic approach to parking charges

# What is being proposed

- The Council is consulting on parking charges until **5<sup>th</sup> May 2019**
- This includes :
  - Charges in council owned car parks
  - *Pay and Display* charges 'on street'
  - Resident and visitor permit charges in Controlled Parking Zones
- No change to 20 Minutes free parking
- It is proposed that charges will increase but there will continue to be incentives and lower charges for electric vehicles

# What is being proposed

- **A charging system that :**

- Is representative of, Mayors Transport policy, other council policy such as Air Quality and compliments surrounding boroughs similar sustainable transport endeavours.
- Is fair and proportionate recognising that there are parts of the borough that are better served by public transport;
- Reflects the resources to enforce Controlled Parking Zones that have longer operating hours;

# Why is this being proposed ?

- Incentive for less car use, meaning fewer trips by car
  - Over one third of all the car trips made by London residents could be walked in up to 25 minutes
- Less car use meaning less vehicle emissions and less **air pollution**:
  - The **main source of air pollution** is from the vehicles on our roads.
  - An estimated **9,000 deaths a year in London** are attributable to the air pollution.



# Why is this being proposed in Merton?

- Less car use can lead to **more physical activity** through use of public transport, walking or cycling.
  - More physical activity lessens the obesity epidemic. **150 primary school classes of Merton children** are overweight.
  - Almost **60% of Merton adults** are overweight.

Page 6

Cycle parking  
delivers



**5x**  
the retail spend  
per square  
metre than the  
same area of  
car parking

*Source: Raje and Saffrey, 2016*

Over a month, people who walk  
to the high street spend up to

**40%  
more**

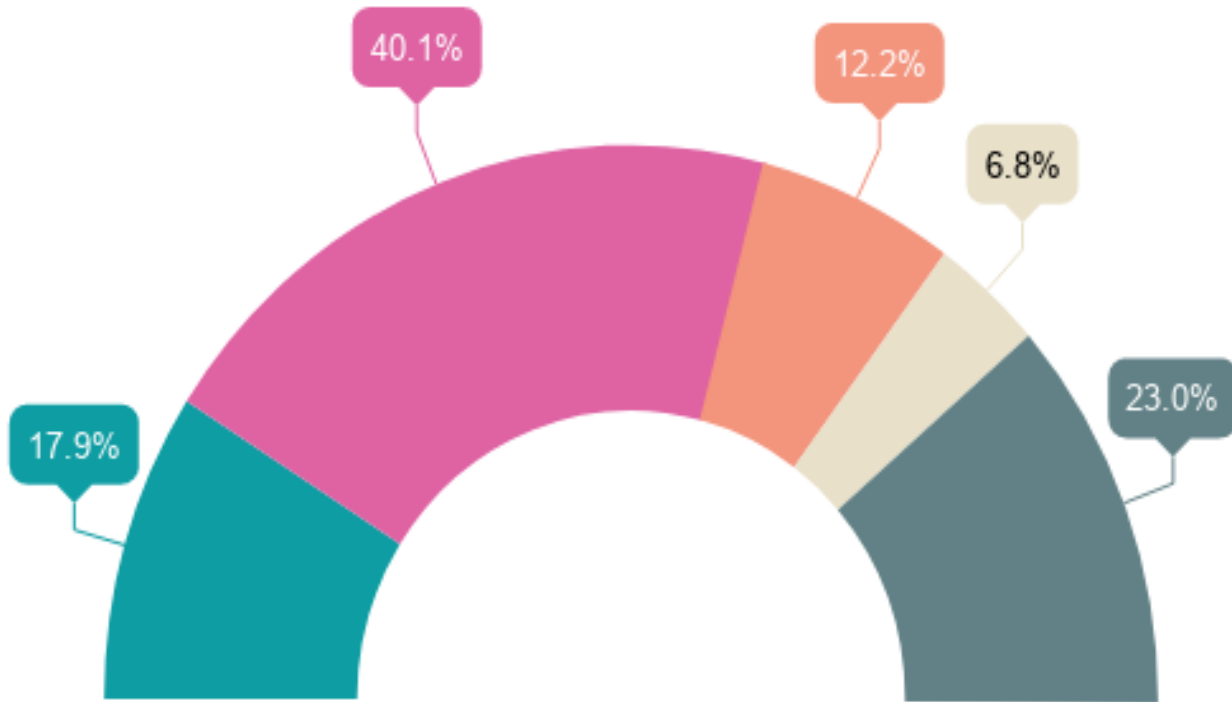


than people who drive  
to the high street

*Source: TfL, 2013*

# Young people in Merton care about air quality:

Page 7



- No problem at all
- A problem
- A big problem
- A very big problem
- Don't Know

**Question 24.0**  
How much of a problem is the cleanliness of the air in my area?  
*This single response question was answered by 1,174 respondents.*

# Proposed car park charges in Wimbledon

CAR PARK (Inclusive of VAT).	Current hourly charge	Proposed hourly charge
Broadway	£1.00	£2.00
Hartfield Road	£1.50	£2.00
Queens Road	£1.00	£1.50
St Georges Road	£1.40	£1.50

# Proposed On Street Pay and Display Charges

On-street pay & display	Per Hour
<b>Zone 1</b> 255 bays in Wimbledon town centre	£4.50
<b>Zone 2</b> Wimbledon Village, Wimbledon Park, South Wimbledon Raynes Park. Colliers Wood,	£3.00
<b>Zone 3</b> Mitcham, Morden and other areas not specified.	£1.50
<b>Zone 1a</b> Wimbledon Common	£1.50

# Proposed Controlled Parking Zone Tier Structure

Merton last increased Permit charges in 2009.

Zone duration	Tier 1 zones Wimbledon	Tier 2 zones Part Colliers Wood/ South Wimbledon/ Raynes Park/ Morden	Tier 3 zones Mitcham/ Part Colliers Wood	100% electric vehicles All zones
<b>Long</b> (12 to 14.5 hrs)	<b>£150</b>	<b>£130</b>	<b>£90</b>	<b>£20</b>
<b>Medium</b> (6 to 10 hrs)	<b>£120</b>	<b>£110</b>	<b>£80</b>	<b>£20</b>
<b>Short</b> (1 to 4 hrs)	<b>£110</b>	<b>£100</b>	<b>£70</b>	<b>£20</b>

- Linked to 'Public Transport Accessibility Levels' (PTAL) as set out by TfL.
- Length of operation of each zone and associated enforcement costs.

# Other boroughs Permit charges

Cost	Highest priced residential permit by council (2018/19)
£300 +	Islington £475, Kingston £350* Enfield, £330
£200 - £299	Lambeth £299, Camden £296, Haringey£280, Brent, £237, Kensington & Chelsea £228, Hackney £214
£90 - £180	Tower Hamlets £181, Wandsworth £166, Sutton £150, <b>Merton £150</b> , Hounslow £130, Southwark £125, Ealing £125, Lewisham £120, <b>Merton £120</b> , Richmond £109,

\*Kingston from April 2019.

# Informing the public and stakeholders

## **Public Notices on street & in the local press.**

- Yellow Notices in each CPZ zone.
- Each pay and display machine
- Local Newspaper
- My Merton has a feature article, (delivered to all residents)
- Press release
- Formally informed:
  - All Councillors,
  - All Resident and Business Associations
  - All Statutory Consultees



# How can I support or make representation on this proposal?

We welcome your comments

- Any person wishing to make representation or object on the proposals should visit: [www.merton.gov.uk/parkingconsultation2019](http://www.merton.gov.uk/parkingconsultation2019)  
We have an online survey and opportunity to submit representations
- In writing to: Parking Services, the London Borough of Merton, Merton Civic Centre, London Road, Morden, Surrey, SM4 5DX quoting reference **Parking Consultation 2019** or by email to [parkingconsultation2019@merton.gov.uk](mailto:parkingconsultation2019@merton.gov.uk), no later than **5 May 2019**.

This page is intentionally left blank



Mark Williams, Head of Communications and Fundraising at Wimbledon Guild



# What is Warm & Well in Merton?

- Raising awareness of the importance of preparing for next winter and giving support on how best to stay warm and well, helping to reduce the number of winter hospital admissions in Merton.
- A partnership between Merton Council, Wimbledon Guild and Age UK Merton
- Running from January 2019 to March 2020 with 3 main aims:
  - 1) To make sure that people at risk receive correct, clear, consistent, useful advice and information to help them stay warm and well
  - 2) To improve awareness and encourage collaboration between services by providing information about what works, and what services are available
  - 3) To support individual people to maximise their income, stay active and keep warm in Winter

**Warm  
& Well  
in Merton**



# Winter pressures

An estimated 43,900 excess winter deaths occurred in England and Wales in 2014/15; the highest number since 1999/00, with 27% more people dying in the winter months compared with the non-winter months (Office of National Statistics).



The majority of deaths occurred among people aged 75 and over; there were an estimated 36,300 excess winter deaths in this age group in 2014/15, compared with 7,700 in people aged under 75 (Office of National Statistics)



In 2016/17 there were 851 emergency admissions for injuries due to falls among people aged 65 years and over. Falls are the leading cause of older people being admitted to hospital as an emergency (Merton Joint Strategic Needs Assessment 2018)



Merton's 2018 Joint Strategic Needs Assessment (JSNA) predicts the number of people aged 65-84 years old will increase by 11.2% to 24,350 by 2025. This is likely to lead to greater numbers of older people suffering from falls and excess winter deaths.

# What does Warm & Well offer?

Page 18



Warm & Well Pack

Information and advice for individuals

Information for organisations working with people at risk

Financial support for individuals

# Warm & Well Pack

- The Warm and Well packs include:
  - A Warm & Well checklist
  - Information about activities, lunch and social clubs available in the borough.
  - Age UK Winter Wrapped Up Guide, which gives information and advice on how to stay warm and a **free thermometer**.
- Age UK Winter Wrapped Up Guide is also online on the Age UK website - [www.ageuk.org.uk](http://www.ageuk.org.uk)






# Warm & Well Checklist








## Warm & Well in Merton Checklist



<p><b>How do you keep warm in winter?</b></p> 	<p>If you need support or more information about keeping warm and well, you can contact:</p> <ul style="list-style-type: none"> <li>Wimbledon Guild: 0208 946 0735</li> <li>Age UK Merton if aged 60+: 020 8648 5792</li> </ul>
<p><b>Are you getting the best deal on your energy supplier?</b></p> 	<p>Switching energy suppliers could save money on your heating bills. The following organisations provide free price comparisons:  <a href="http://www.uswitch.com/">www.uswitch.com/</a> - 0800 6888 557  <a href="http://www.moneysupermarket.com">www.moneysupermarket.com</a> – 0800 177 7087  <a href="http://www.simplyswitch.com">www.simplyswitch.com</a> – 0800 011 1395                  If you need support or more information, you can contact:                  Age UK Merton (State Pension Age and over): 020 8648 5792</p>
<p><b>Are you getting all the benefits to which you are entitled?</b></p> 	<p>You may be eligible for benefits to help with your energy bills such as Winter Fuel Payments or the Warm Home Discount scheme. You can use a benefits calculator to check this:  <a href="https://benefitscheck.ageuk.org.uk/Home/Start/">https://benefitscheck.ageuk.org.uk/Home/Start/</a>  <a href="https://benefits-calculator.turn2us.org.uk/AboutYou">https://benefits-calculator.turn2us.org.uk/AboutYou</a>  <a href="https://www.gov.uk/benefits-calculators">https://www.gov.uk/benefits-calculators</a></p> <p>If you need support with working out your benefits, please contact:</p> <ul style="list-style-type: none"> <li>Wimbledon Guild if aged 55+: 0208 946 0735</li> <li>Age UK Merton (State Pension Age &amp; over): 020 8648 5792</li> </ul>
<p><b>Do you need financial help to ensure you can keep warm and well in winter?</b></p>	<p>Wimbledon Guild can provide grants for items people in Merton desperately need such as fuel costs, food, warm clothing, bedding etc when they have exhausted all other avenues of help.                  Contact Wimbledon Guild Welfare: <a href="mailto:welfare@wimbledonguild.co.uk">welfare@wimbledonguild.co.uk</a></p>
<p><b>Are you struggling to buy food?</b></p> 	<p>If you need Food Bank vouchers, please contact:</p> <ul style="list-style-type: none"> <li>Wimbledon Guild: 0208 946 0735</li> <li>Age UK Merton: 020 8648 5792</li> </ul>
<p><b>Have you had the flu jab this winter?</b></p> 	<p>The flu jab is free for people aged over 65 and those who have conditions that make them susceptible to complications if they have flu. Ask your GP or pharmacist for more information.</p>

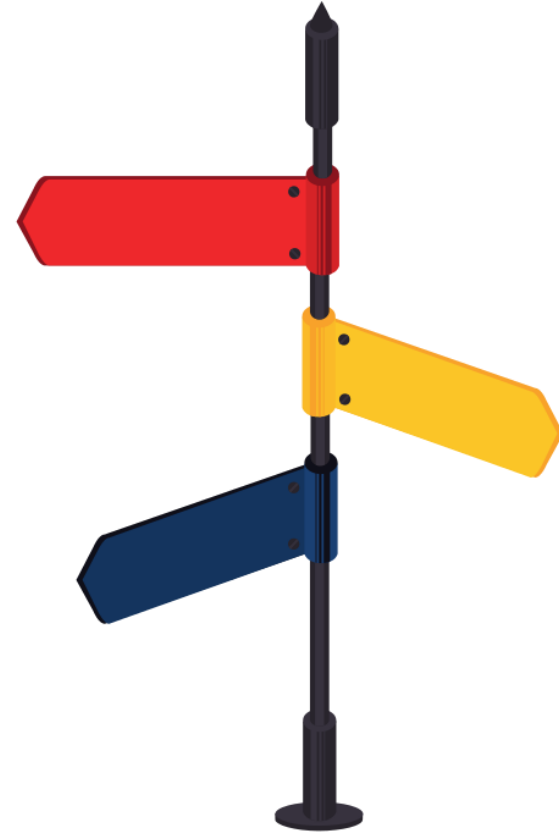


<p><b>Have you had any falls in the last year and how has this affected you?</b></p> 	<p>If you are worried about falling, Merton Falls Prevention Service provides assessment, advice and exercise for older people who are at risk of falling. Please call: 0333 241 4242</p> <p>Increasing physical activity can improve strength, balance and coordination. For an assessment and referral to an exercise class please contact:</p> <ul style="list-style-type: none"> <li>Wimbledon Guild: 0208 946 0735</li> <li>Age UK Merton: 020 8648 5792</li> </ul>
<p><b>Do you need any specialist equipment or adaptations in your home?</b></p> 	<p>Occupational Therapy in Merton provide specialist equipment and adaptations such as toileting/bathing equipment and grab rails, to help people stay independent at home and in everyday life. The council may cover the cost, depending on customers' circumstances and need. Disabled facilities grants (DFGs) can help meet the cost of providing adaptations.                  Contact Occupational Therapy in Merton: 020 8545 4477 / 4428                  Mon to Fri 9:30am to 12:30pm (no facility to leave messages)</p>
<p><b>Do you know what to do if there is a cold snap on the way?</b></p> 	<p>Watch/listen for cold weather alerts – TV/Radio/Internet                  Keep your main living room around 21°C/70°F and the rest of your home heated to at least 18°C/65°F and wear suitable clothing.                  Where do you usually sit in the house? You can place the free thermometer (from your pack) there to check the temperature.</p>
<p><b>Are you keeping active and busy?</b></p> 	<p>There are lots of social activities and classes locally. Contact:</p> <ul style="list-style-type: none"> <li>Wimbledon Guild: 0208 946 0735</li> <li>Age UK Merton: 020 8648 5792</li> </ul>
<p><b>Are you feeling connected?</b></p> 	<p>The Merton Befriending Service can match you with a volunteer to visit regularly:</p> <ul style="list-style-type: none"> <li>Wimbledon Guild: 020 8946 0735</li> <li>Age UK Merton (65+): 020 8648 5792</li> </ul> <p>Wimbledon Guild offer counselling and group therapy for anyone over 18 who lives, works or studies within Merton and offer charitable rates.                  Contact Wimbledon Guild: 0208 296 0030</p>



# Information for individuals

- Age UK Merton and Wimbledon Guild are giving advice on:
  - Keeping Warm & Well
  - Fuel poverty
  - Money & benefits
  - Transport (Dial-a-Ride, Taxi Card & Blue Badge)
  - Housing
  - Access to local services



# Information for organisations

- We are holding Warm & Well talks for residents and staff at voluntary and community organisations, health and social care providers

This will include the opportunity to run through the Warm & Well checklist on a 1:1 basis and to be referred to the appropriate organisation

- We are starting Warm & Well engagement activities in the priority wards of Cricket Green, Figges Marsh and Pollards Hill.



# Financial Support for Individuals

- Wimbledon Guild can provide grant distribution:
  - For winter items people in Merton desperately need such as fuel costs, food, warm clothing, bedding etc when they have exhausted all other avenues of help
  - An application form would need to be completed and a supporting statement (by phone, email or letter) from a referring agent is preferred
  - Applicants must provide evidence of being Merton residents, proof of income and photo ID.
  - For further information, including the guidance and application form, please contact: [welfare@wimbledonguild.co.uk](mailto:welfare@wimbledonguild.co.uk)



# Staying Warm and Well in Winter

- Make sure you have a yearly flu jab. It's free for people aged over 65, if you have certain long-term health conditions or if you are a carer
- Keep moving- when indoors, try not to sit still for more than an hour
- Eat at least one hot meal a day and drink several hot drinks
- Several thin layers of clothing will keep you warmer than one thick layer, as the layers trap warm air between them.
- Choose boots with non-slip soles and a warm lining, or wear thermal socks. These boots not only keep your feet warm, they also keep you safe if the ground is slippery
- Check local news and weather reports for advice when bad weather is forecast

Page 24



To help you **stay well**, it's important to **keep warm**, follow as healthy a lifestyle as you can, and **have a flu jab**.



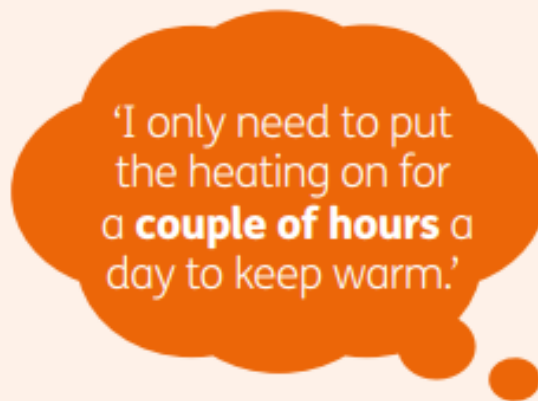
# Myth-busting



As well as a hat, wrapping a scarf around your neck and mouth can **help to protect** your health. Breathing in cold air raises the risk of chest infections and increases blood pressure.



**18°C/64°F is the ideal** temperature for your bedroom to make sure that you are warm and well in winter.



It's best to keep your house at a **stable temperature** as sudden changes can be dangerous. Try to keep your main living room at 21°C/70°F and close any doors to rooms you're not using.



Contact your local Age UK for a **benefits check**, to find out what financial support is available and to see if you're eligible for any help.

# Contact details



*Wimbledon Guild*

[ckiernan@wimbledonguild.co.uk](mailto:ckiernan@wimbledonguild.co.uk)

**0208 946 0735**

**07551 014 515**





This page is intentionally left blank



# PLAY WIMBLEDON

Co-design process for new public spaces in Wimbledon Town Centre,  
St Mark's Place and junction New Wimbledon Theatre.  
October 2018 – March 2019.



LUGADERO.

# BACKGROUND

**LET'S PLAY**

**THE UNEXPECTED**

**NEW ROOMS**

**ROAD TO 2020**

**PLAY WIMBLEDON**

*An urban gamification process for rethinking future Wimbledon*

FW022

**Warehouses**

**The Greenes**

**Theatre Green/Regeneration**

**Wimbledon Green**

**Wimbledon Green**

**The Station Green**

**Law/Waterplay at the Yard**

**The Aviaries**

**The Car Park / Skate Park**

**Build up and green**





# METHODOLOGY

Analysis

Campaign for advertising the co-design process and the events

Temporary installations

P  
o  
g  
e  
3  
e  
-  
design workshops

Further correspondence with residents

Collecting responses and ideas

Preliminary design

Meeting with residents and feedback

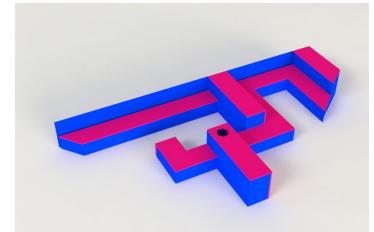
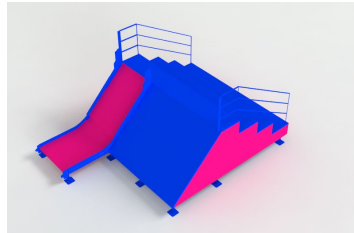
Meeting with Love Wimbledon BID and feedback

Revised proposals

Sharing the revised proposals

Presentation in the Wimbledon Community Forum

Next steps



# CO-DESIGN WORKSHOPS

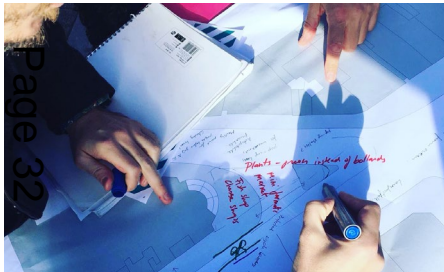
The co-design workshops used a mix of participatory methods to engage participants. The methods included:



PLAY AS AN ENGAGEMENT STRATEGY



INTERVIEWS



MAPPING PROPOSALS



LISTENING



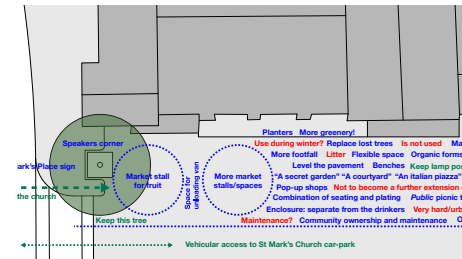
DISCUSSING CATALOGUE OF POSSIBILITIES



TESTING POSSIBILITIES IN A MODEL



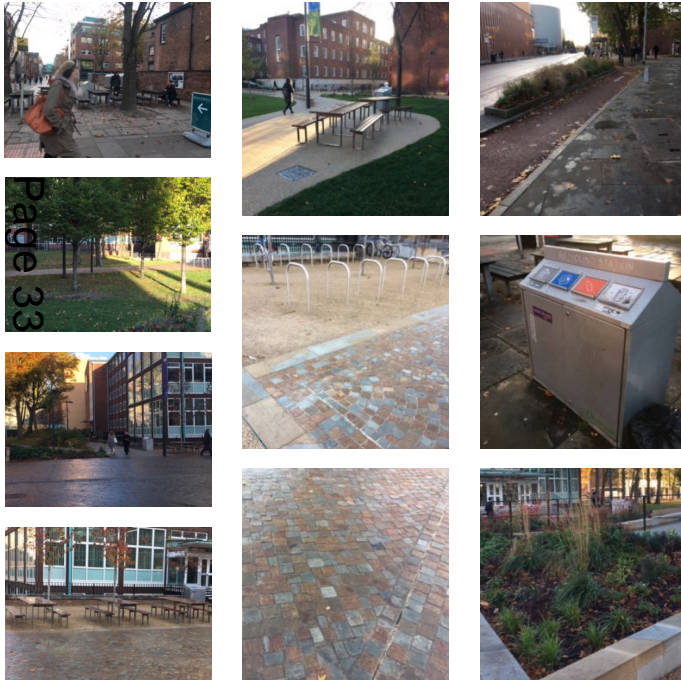
PARTICIPATORY PAINTING



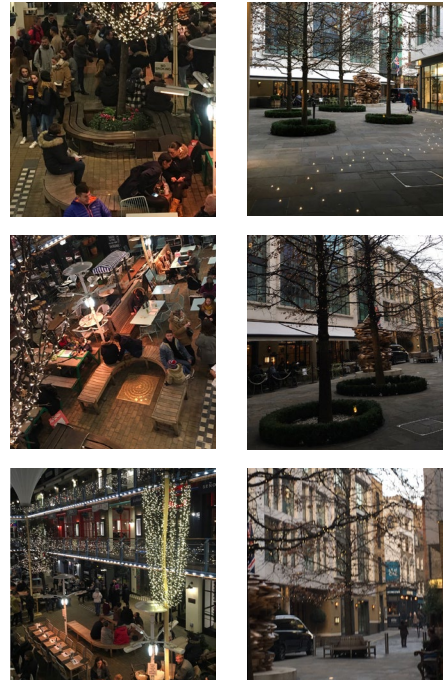
HARVESTING IDEAS

# FURTHER CORRESPONDANCE WITH PARTICIPANTS

PHOTOS FROM MANCHESTER SENT BY A WIMBLEDON RESIDENT.

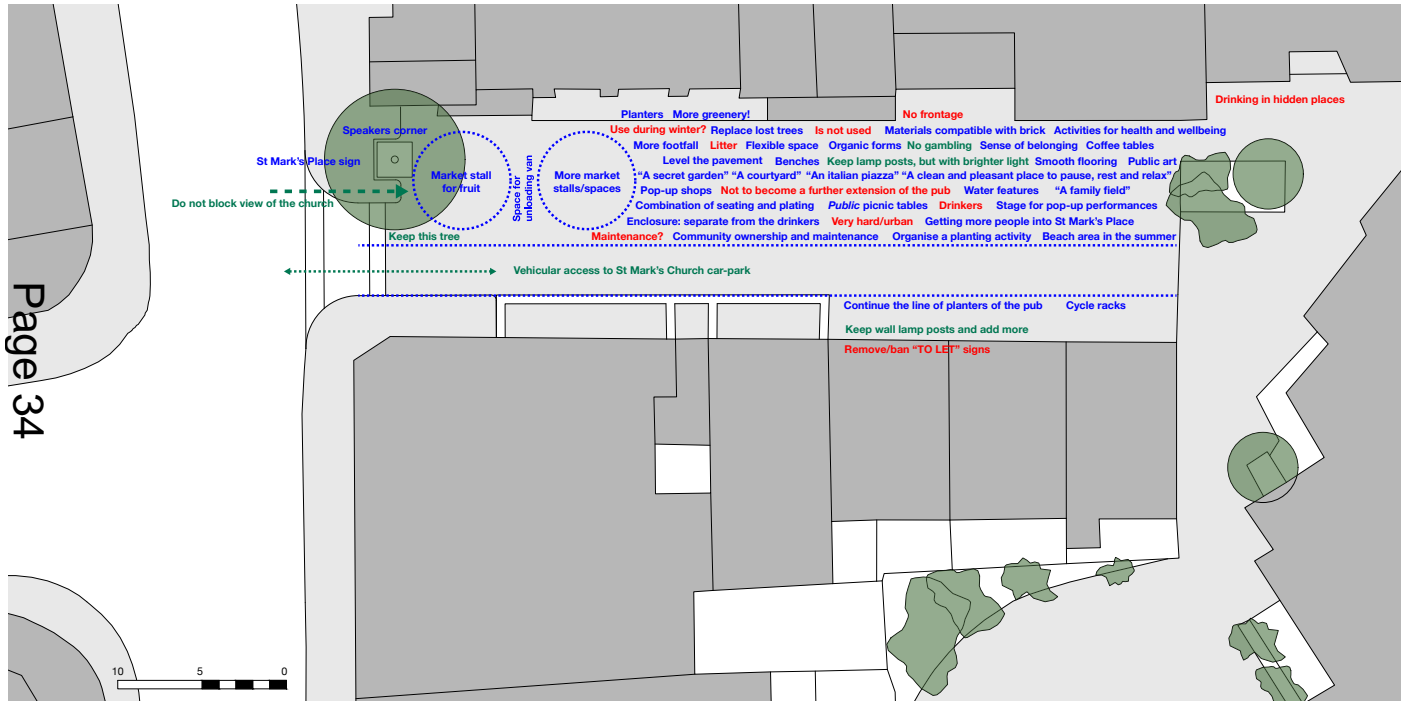


PHOTOS FROM THE WEST END, LONDON, SENT BY A WIMBLEDON RESIDENT.



page 33

# COLLECTING RESPONSES AND IDEAS



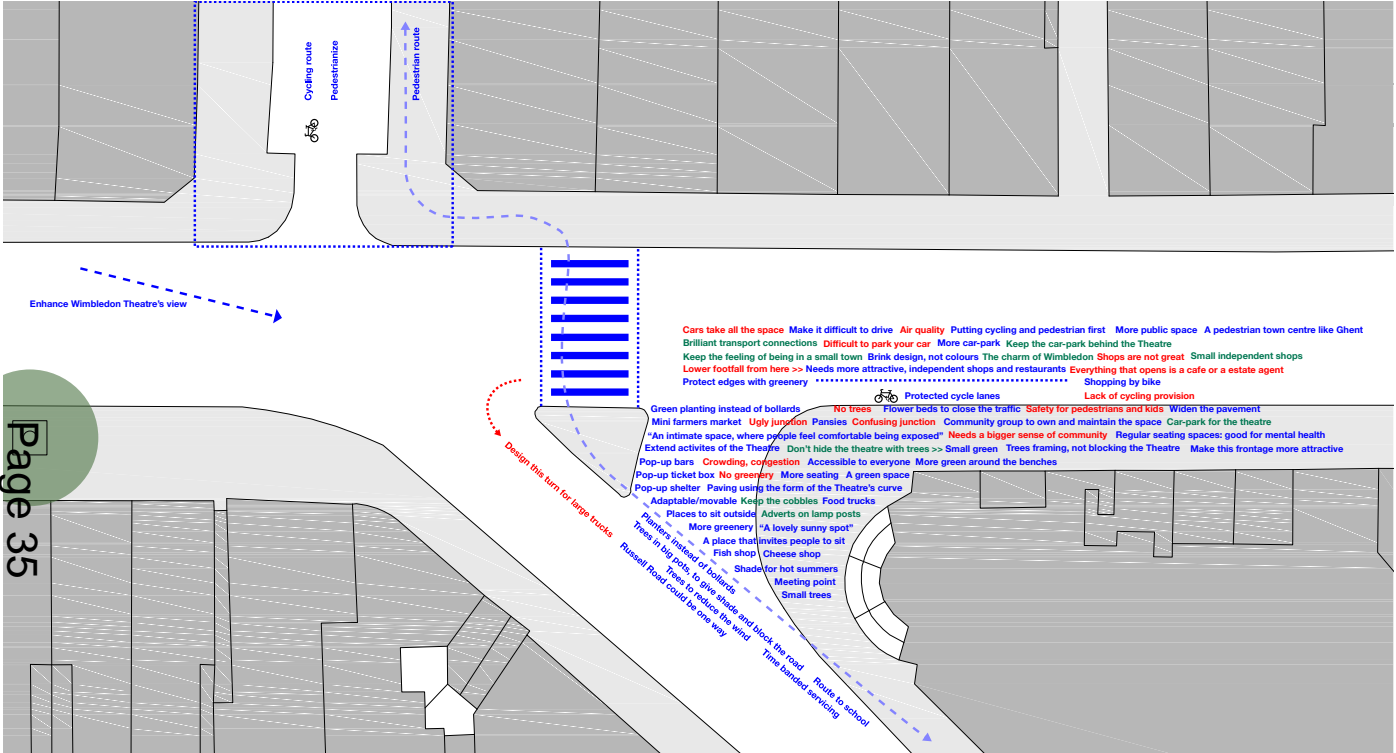
CO-DESIGN MAP ST MARK'S PLACE. COLLAGE OF RESPONSES FROM CO-DESIGN WORKSHOP.

What are your main concerns about St Mark's Place?

What should change or should be improved?

What should not change?





CO-DESIGN MAP JUNCTION NEW WIMBLEDON THEATRE. COLLAGE OF RESPONSES FROM CO-DESIGN WORKSHOP.

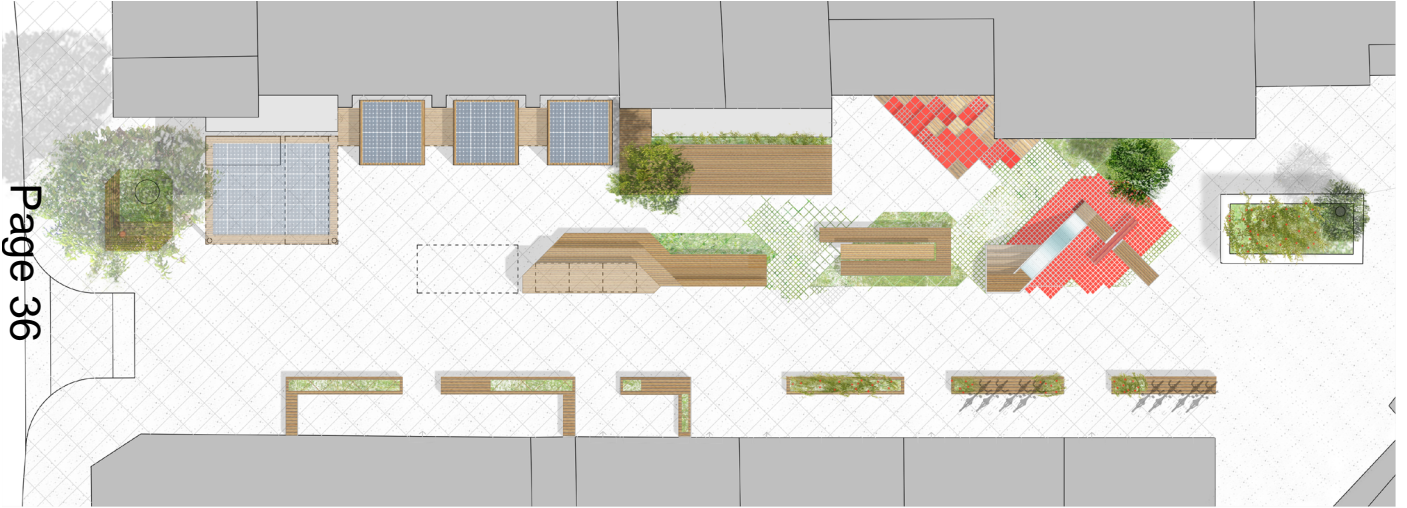
What are your main concerns about the junction in New Wimbledon Theatre?

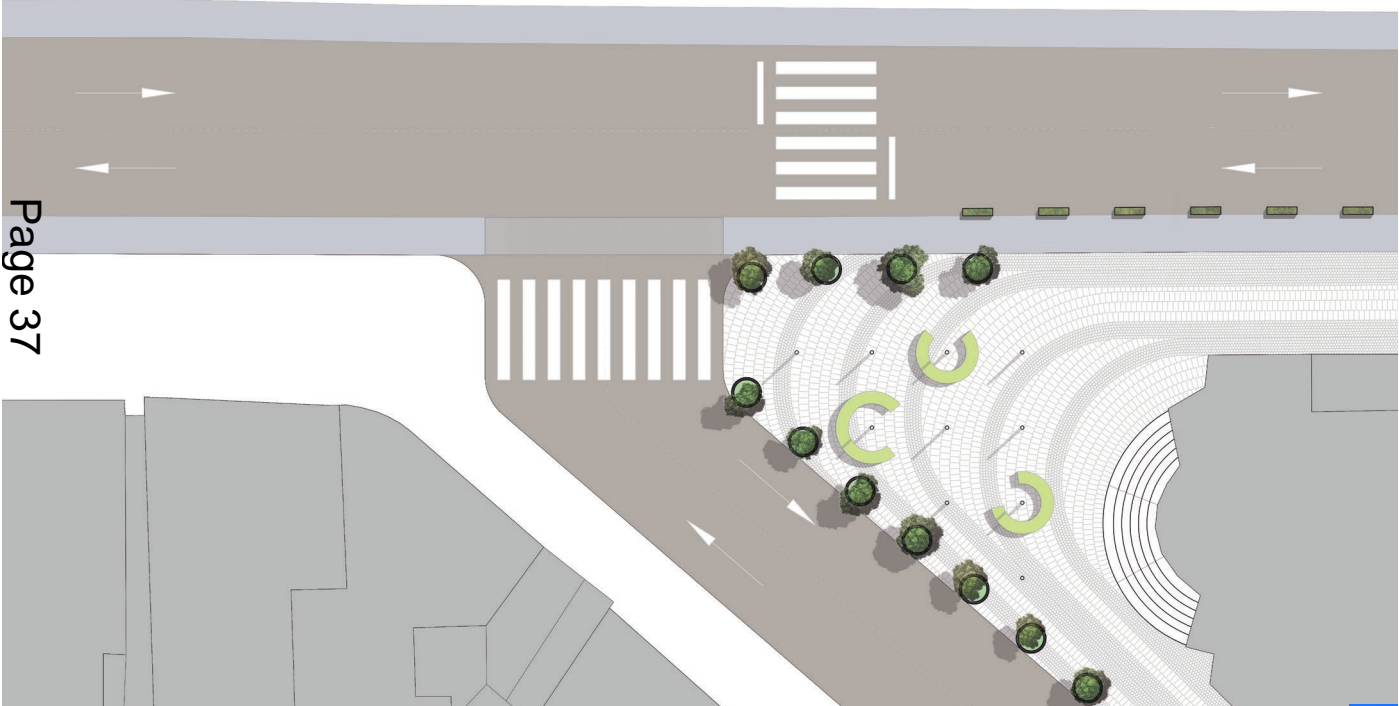
What should change or should be improved?

What should not change?

# PRELIMINARY DESIGN

Page 36





# MEETING WITH RESIDENTS TO DISCUSS PROPOSALS



REVISED PROPOSAL ST MARK'S PLACE  
REDESIGNING THE PLANTER







Page 40



ST MARK'S PLACE  
PERSPECTIVE



**CONCERNS RAISED BY RESIDENTS:**

Trees.

Enhancement of the conservation area as part of the improvements.

Concerns on night safety.

Concerns about the cost of the pavement.

Vehicular access from/to St Mark's Church, freight vehicles and rubbish collection.

St Mark's Church 'sight lines'.

Flexibility.

Design of the kiosks.

Durable materials.

Events on stage no later than 10:30pm.







Page 43



JUNCTION NEW WIMBLEDON THEATRE  
PERSPECTIVE

**JUNCTION NEW WIMBLEDON THEATRE  
AXONOMETRIC VIEW**



**CONCERNS RAISED BY RESIDENTS:**

Concerns of the placement of sitting areas near the road.

Concerns on the lack of greening.

Concerns on the size of the road and the interaction between cyclists, cars, pedestrians and buses.

Green corridor in Kings Road.

## WHAT HAPPENS NEXT?

In 2019/2020, Merton Council will **seek funding to build these two new public spaces**. Before these public spaces are built, the following steps should be followed:

**Consultation**

**Detailed design**

**Collective greening and maintenance**

This page is intentionally left blank